

# JICA KNOWLEDGE CO-CREATION PROGRAM

## “IMPROVEMENT OF POLICY ON OCCUPATIONAL SAFETY AND HEALTH

-From Policy Development to Implementation Measure” October 1-November 1, 2019.

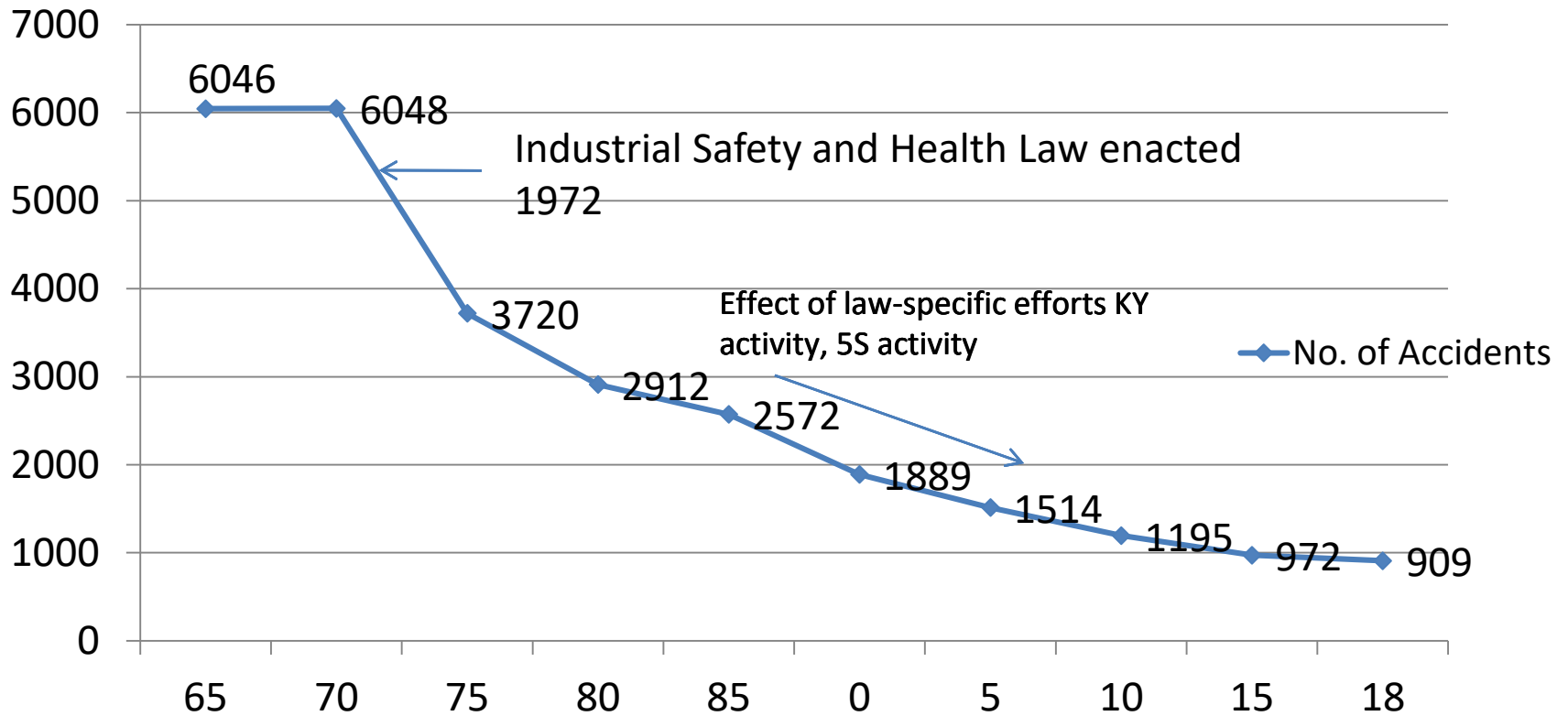
Thinley Gyeltshen  
Labour Protection Division  
Department of Labour

# Presentation

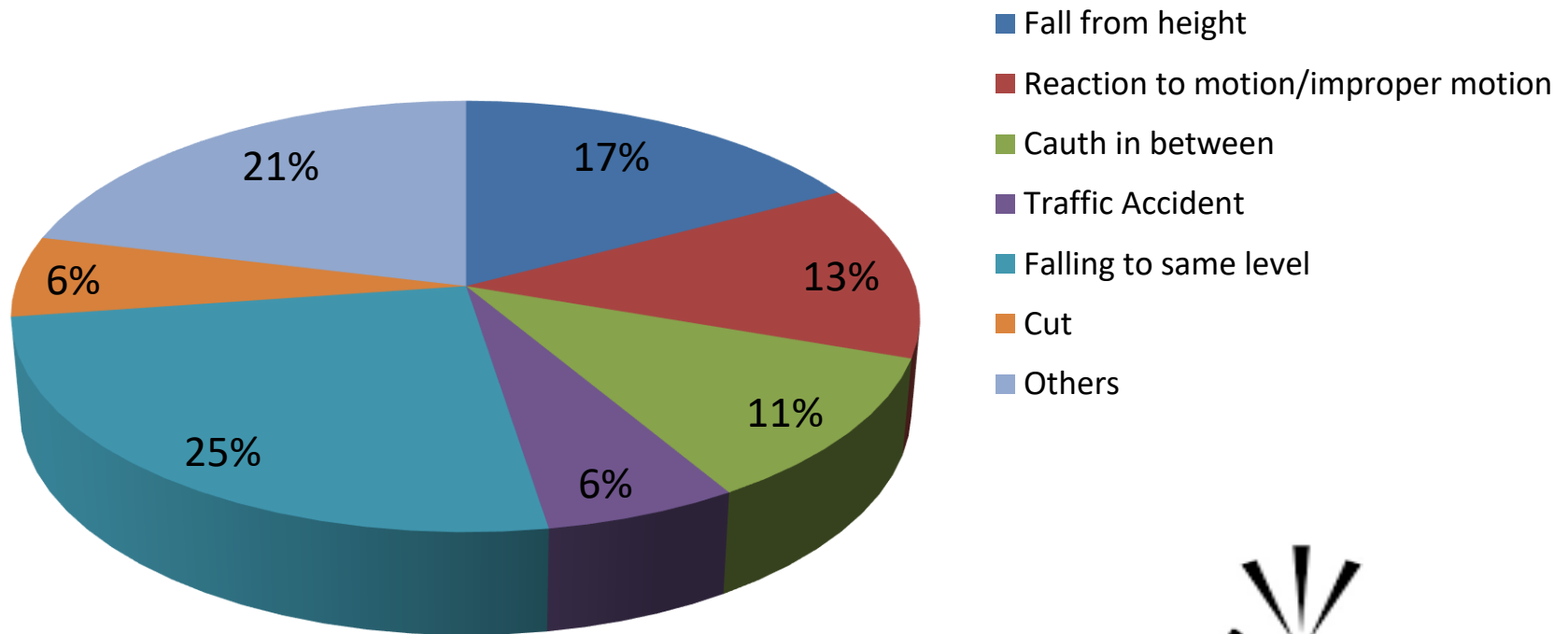
- Brief overview of OSH report in Japan
- Brief overview of OSH report in Bhutan
- Learnings from KCCP
- Way forward

# Industrial Accidents in Japan

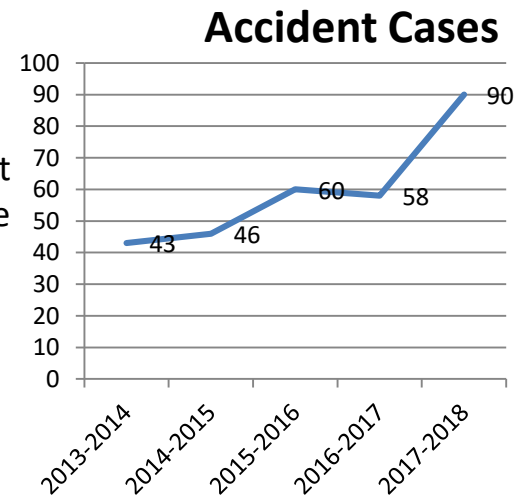
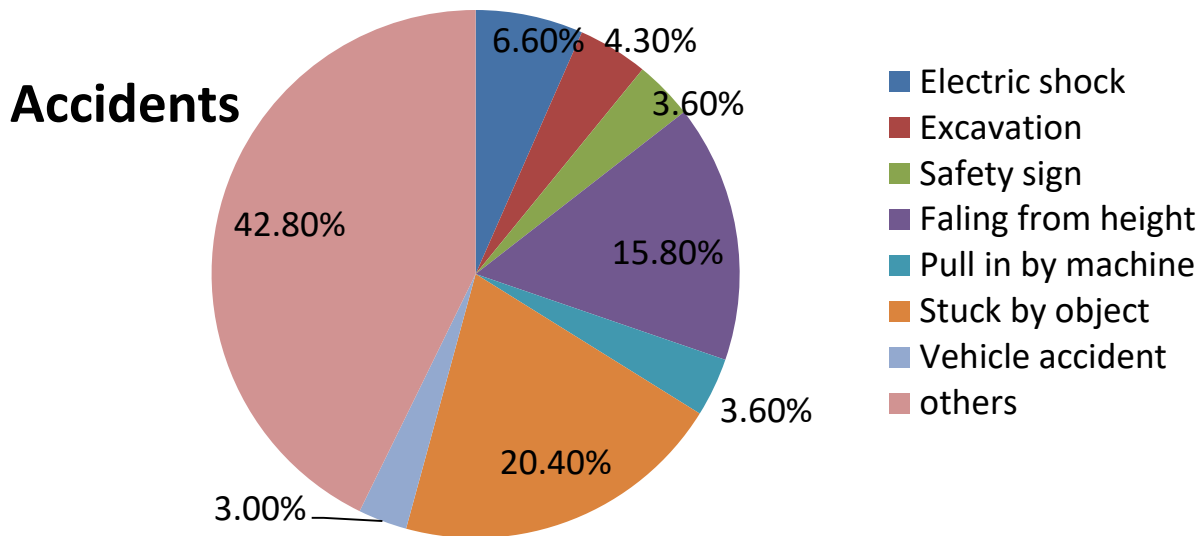
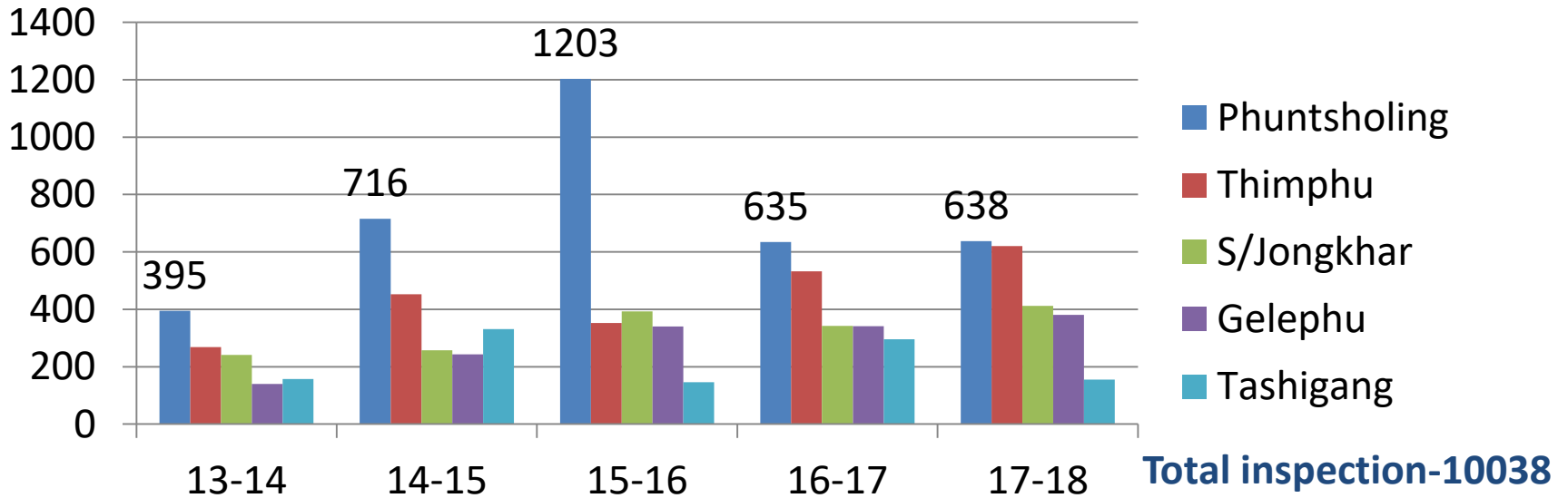
No. of Accidents



# Types of Accidents



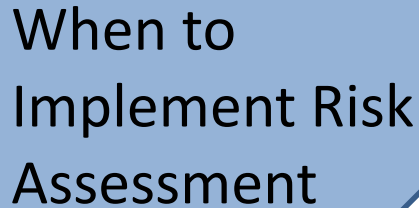
# Inspections carried in last five years



# Learning

- **Risk Assessment**-Why do we Need Risk Assessment
  - Eight Basic Concepts of OSHMS
  - Incorporation of Workers' Opinion
  - Process leading to an Injury
  - Risk Reduction Measures
- **Occupational Safety and Health at Small and Medium Enterprise**-how can we move better in safety and health at work
- **Zero Accident Practice**-using three principals
- **Point and Call**
- **Personal Protective Equipment (PPEs)**

# Why do we need Risk Assessment-Eliminate or reduce risks or hazards before accidents occur

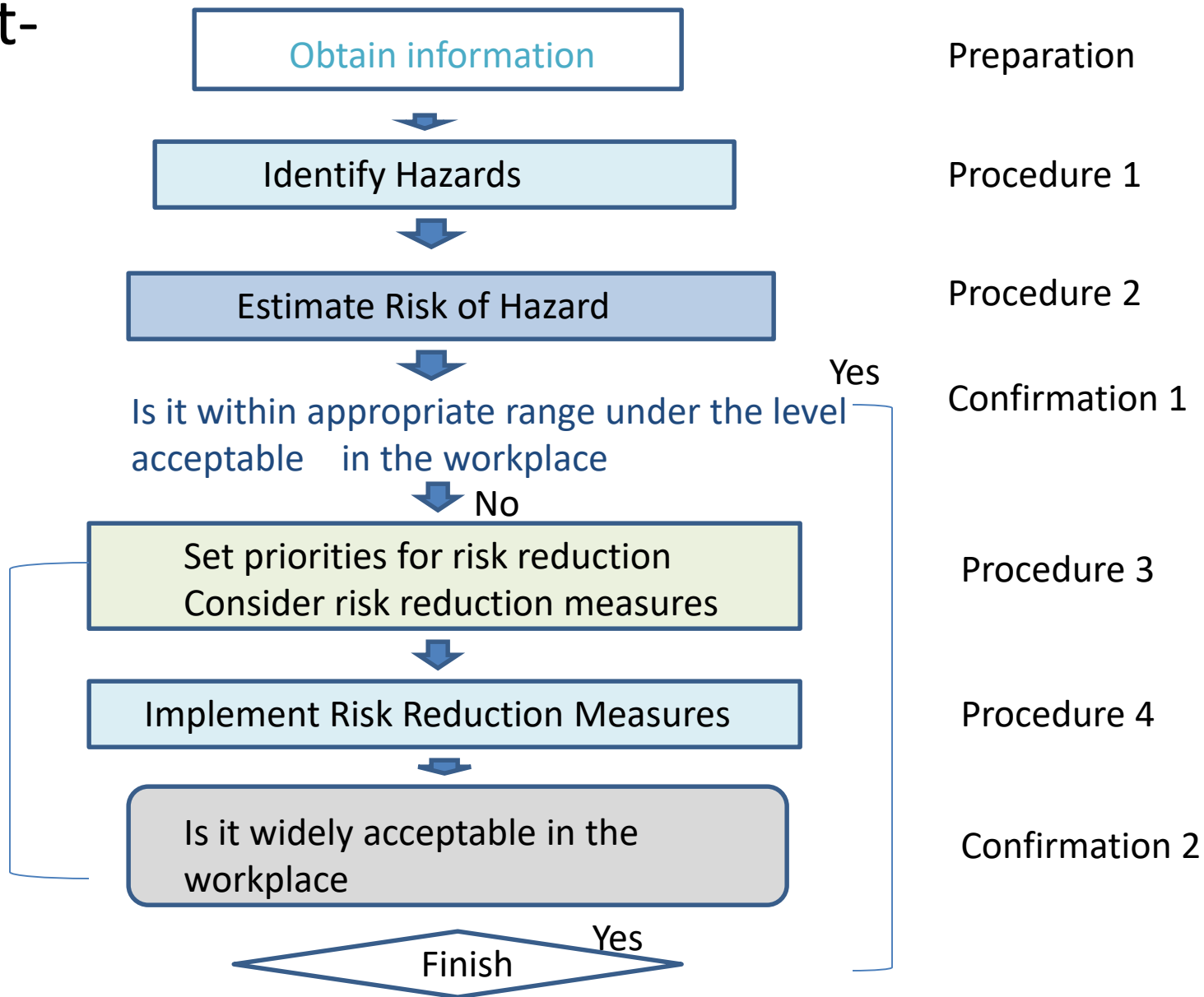


When to  
Implement Risk  
Assessment

- When structure is installed, relocated, modified or dismantled
- When facility is newly introduced or changed
- When raw material is newly adopted and changed
- When working method and working procedure are newly adopted or changed
- At the occurrence of work related accidents

# Basic procedures of Risk Management

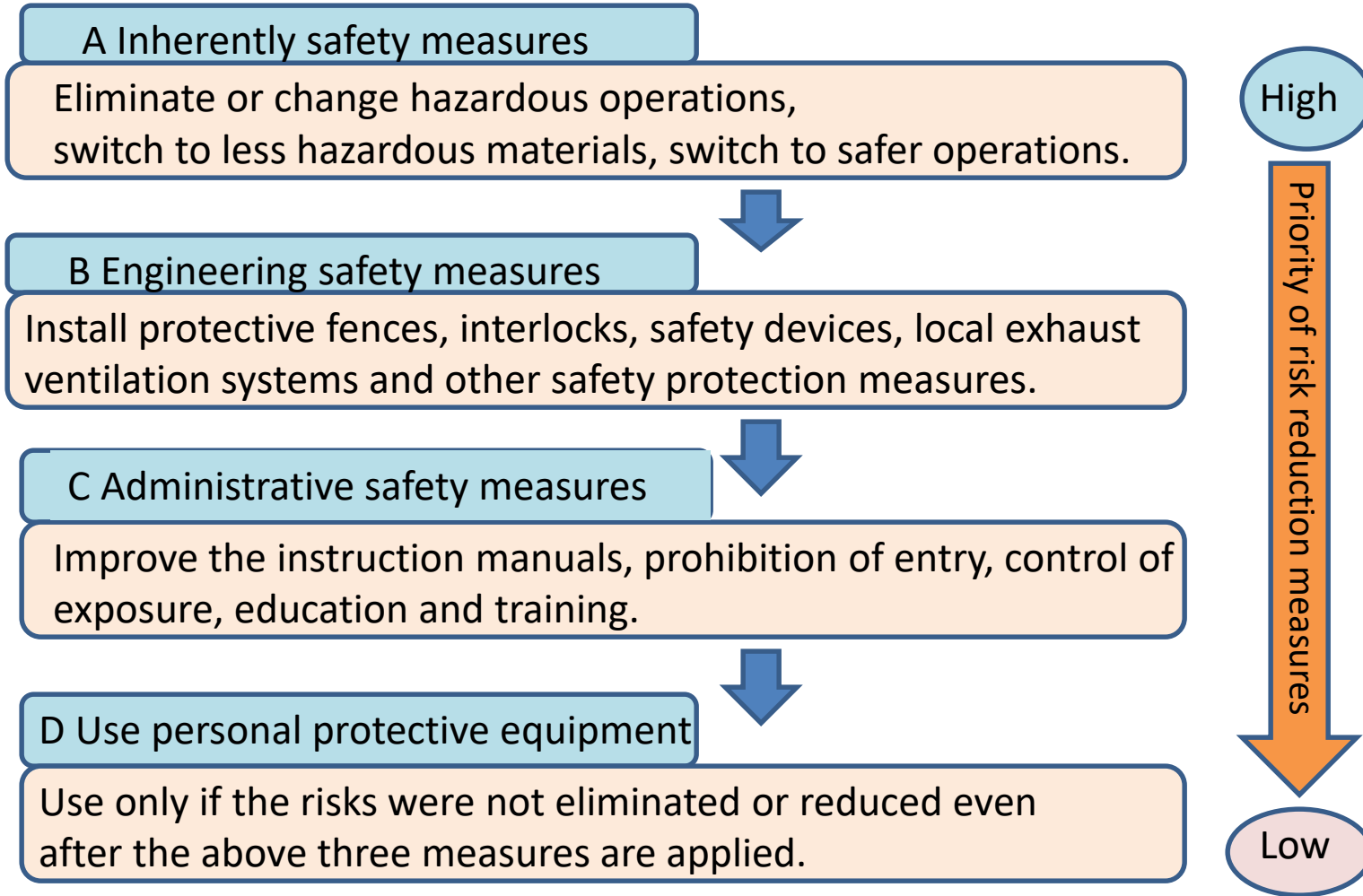
Start-





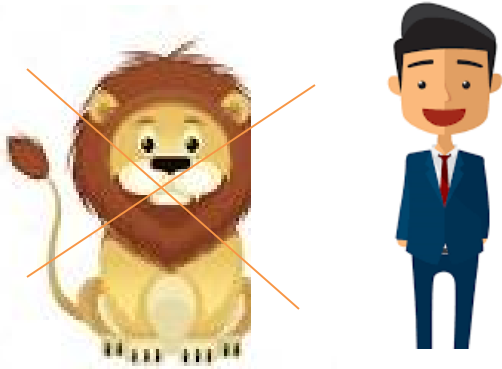
# Risk Reduction Measures and Implementation

Implement measures if applicable



# Risk Reduction Measures

## a. Inherently safety measures



Stop using hazardous and switch to less hazardous one

## b. Engineering safety measures



Installation of safety device, protective fence etc

## c. Administrative control measure



Control a worker with prohibition of entry, education, training ect.

## d. Use of personal protective equipment

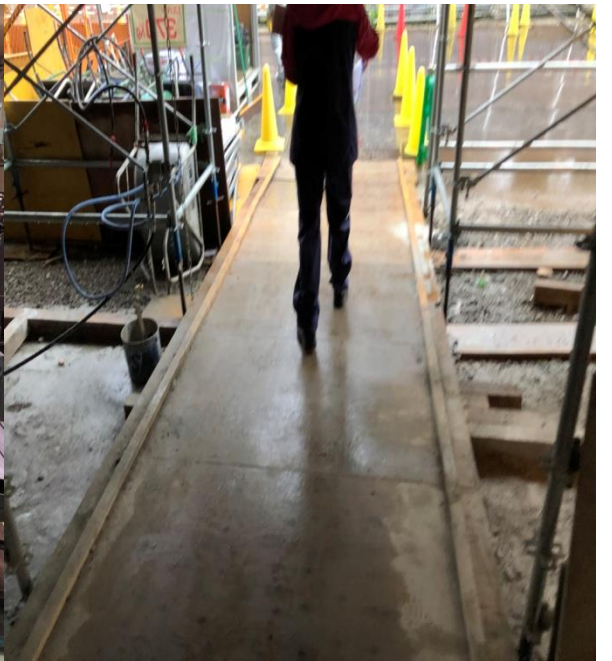


Use only if the risks were not eliminated or reduced even after above measures are applied

# OSH at Small and Medium Enterprise

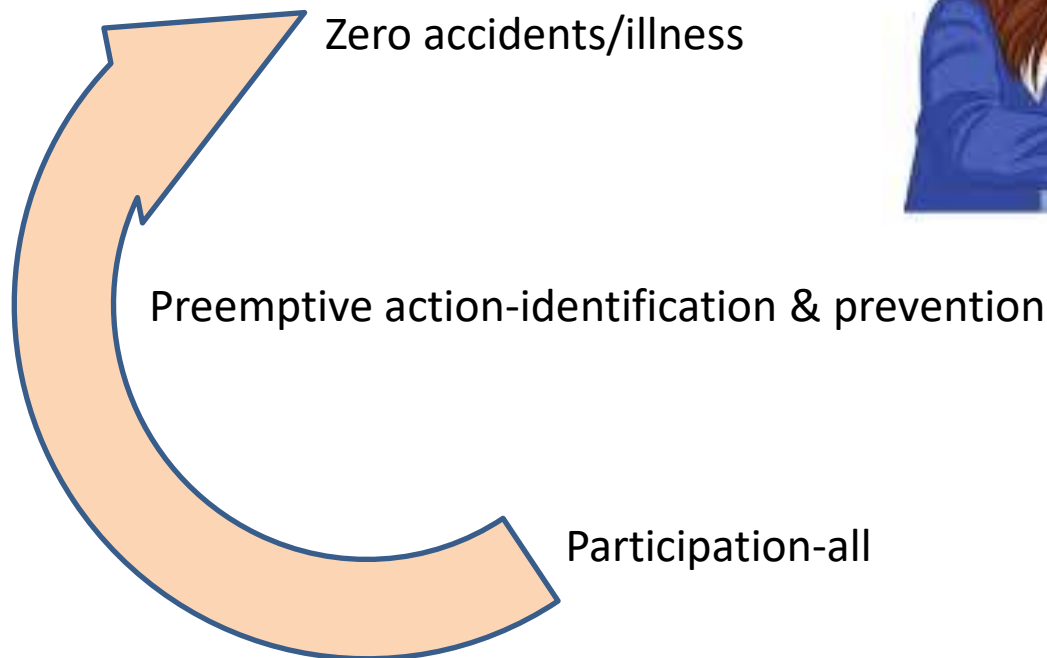
- Understand the practical ways to facilitate workplace improvements in small and medium-sized enterprises
- Focus on the application of low-cost improvements for immediate changes of work and its productivity
  - a. **Practical approach**- good practice approach, support initiative of employee
  - b. **Participatory steps**- encourage systematic efforts (how to, not you must) opportunities to take group action
  - c. **Multi-faceted action**- focus on low-cost improvements, emphasize multiple interventions

# Good Examples



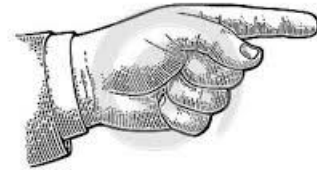
# Zero Accident Practice

- Three basic principles of Zero Accidents Campaign
  - a. Principal of Participation
  - b. Principal of Preemptive Action
  - c. Principal of Zero Accidents



# Point and Call method

- Promote work safety and error-free work
- Identification and confirmation
- Safety check method and accuracy

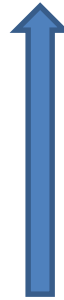


www.illustration.com

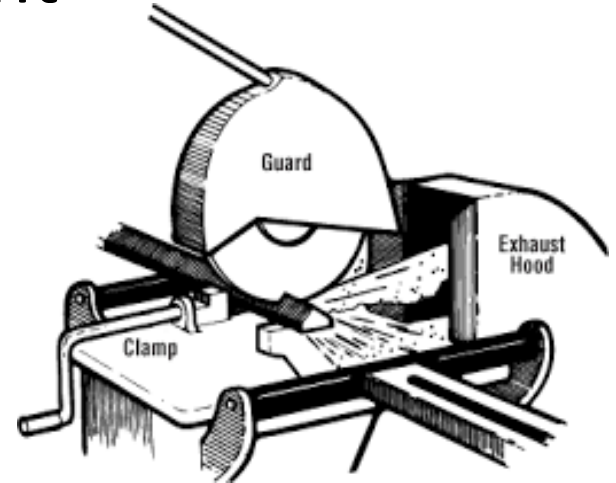
# Personal Protective Equipment

## Occupational Health Management

- a. Work Environment
- b. Work management
- c. Health Management



Priority



## 1. Work Environment

- material substitute (harmful-low harmful)
- Device (ventilation, light, etc)
- work environment measurement device



## 2. Work management

- Plan
- Process
- Method
- Break
- Tool
- PPE (personal protective equipment)



## 3. Health Management

- medical examination
- rest
- medical treatment
- work change





# Priority Occupational Health Management

↑  
priority

Work Environment management  
**Top priority**

Personal Protective Equipment (PPE)  
**Last**



# PPEs



Safety Helmet



Ear plug



Safety Gloves



Safety Goggles



Safety Harness



Ear muff



Safety boot



Safety clothing

# Way forward

- Promotion of Risk Assessment at the work place by means RA methods and measures
- Reduction of occupational accidents and diseases in SMEs
- Promotion of working environment with participatory actions
- **Target Group(training)-** 1. Safety Officers from Enterprises (OSH policy developed)  
2. Managers and Employees of small and medium enterprises (SMEs)

Thanks